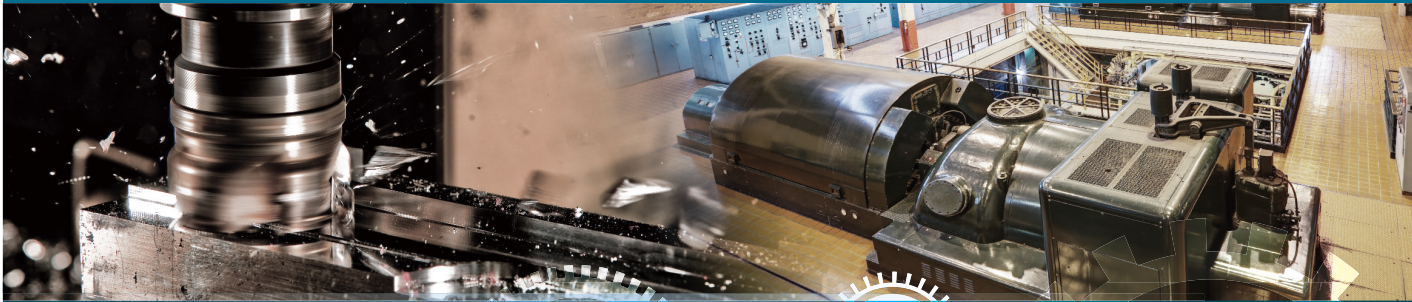


DS-R35 Vibration Sensor



Complies with ISO 10816-3, ISO 17243 International Standards for machine vibration measurement.

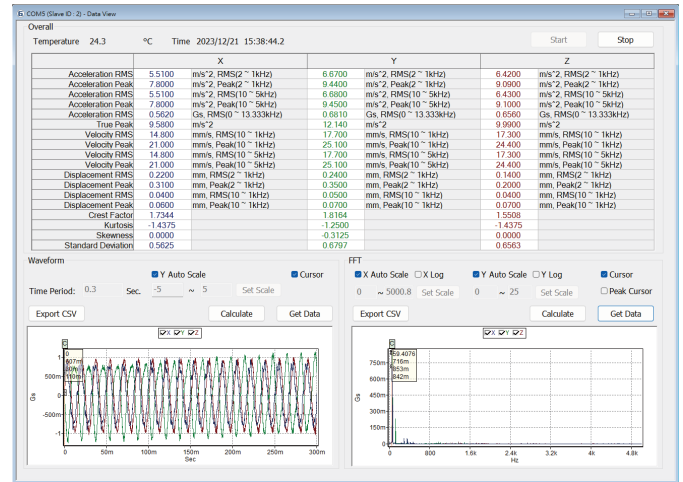
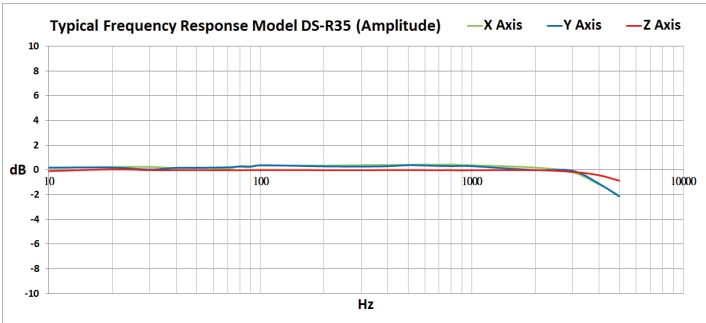
The DS-R35 vibration sensor is an advanced sensor designed for machine health monitoring applications. It provides triaxial vibration and temperature measurements. This sensor is capable of measuring and monitoring machine vibration acceleration and various characteristic values. Its high-frequency bandwidth design offers valuable data to aid in predicting machine performance and condition.

Features

- Up to 5kHz high-frequency response.
- Accurate triaxial vibration and temperature measurement.
- IP67 design, operates in harsh environments with excellent durability and reliability.
- The Modbus RTU communication protocol ensures stable data transmission, enabling remote monitoring and predictive diagnostics.
- The RS485 output provides vibration spectrum, time waveforms, and vibration characteristic values, facilitating machine fault diagnosis.

Applications

- Machine health monitoring
- Vibration monitoring for wind turbines
- Industrial automation process monitoring
- Condition monitoring of energy production equipment
- Monitoring of robots and automation equipment
- Vibration monitoring for rail transport



Specification

Dynamic	
Axis	Triaxial
Acceleration Range	±16 g-peak
Resolution	0.488mg
Frequency Range	2Hz~5kHz (± 3 dB)
Output Data	
Displacement RMS	2Hz~1kHz, 10Hz~1kHz
Displacement Peak	2Hz~1kHz, 10Hz~1kHz
Velocity RMS	10Hz~1kHz, 10Hz~5kHz
Velocity Peak	10Hz~1kHz, 10Hz~5kHz
Acceleration RMS	2Hz~1kHz, 10Hz~5kHz
Acceleration Peak	2Hz~1kHz, 10Hz~5kHz
Temperature	-20°C~70°C
True peak	Fs @ 13.333kHz
Spectrum	0Hz~5kHz, Lines=6145
Timewave	Samples=14848 Fs=13.333kHz
Other Features	Crest Factor
	Kurtosis
	Skewness
	Standard Deviation

Communication

Interface	RS485
Protocol	Modbus RTU
Max. baud rate	921600 bps
Electrical	
Power	6VDC~24VDC
LED Indicator	1 (RGB)
Environmental and Mechanical	
Dimension	φ35 x 26 mm
Weight	75 gram(Body)
IP Rating	IP67
Connector	M8 4 pin Female connector
Mounting	Adhesive, bolt/screw & magnet
Operation Temperature	-20°C~70°C
Storage Temperature	-20°C~80°C
Operation Humidity	5%~95% RH
Certification	CE

